

**SHIRIN**

seit 1979



**fliegenderteppich**

schöner wohnen

*New Collection*

---

*The Art of Weaving*

*Unsere Leidenschaft ist die Kreation von Teppichkunst. In Zusammenarbeit mit unseren Partnern und Inneneinrichtern haben wir mit hochwertigen Materialien Knüpfkunst-Kollektionen entwickelt, die trendig moderne Einrichtungen aufwerten, wobei dennoch ihre klassischen Wurzeln ersichtlich bleiben.*

*Der Katalog verdeutlicht, dass nahezu alle Gestaltungswünsche von elegant bis luxuriös, puristisch oder naturverbunden sich in jedem Raum verwirklichen lassen. Ein Teppich kann selbst kleine Räume aufwerten, erzeugt Stimmung und Behaglichkeit.*

*Als Gestaltungselement kann er den Mittelpunkt eines Raumes bilden, große Räume und offene Wohnbereiche teilen oder strukturieren. Zudem wirkt er schalldämpfend und wärmeisolierend.*

*Den Schwerpunkt des ersten Teils des Kataloges bilden moderne Teppiche, während beim zweiten Teil die klassischen, alten und antiken Teppiche im Vordergrund stehen.*

*Our passion is the art of rug making. In collaboration with our partners and interior designers we create oriental rug collections made of high-quality materials, that enrich contemporary interior designs whilst maintaining traditional roots.*

*This catalogue illustrates how different design requirements from elegant, luxurious and purist to close-to-nature designs can be realized. You will find various samples of carpets that can beautifully decorate and enhance the atmosphere of a room.*

*See how modern carpets fit in classic interiors and how classic carpets can be perfectly combined with contemporary interiors.*

*As a design element a rug can become the heart of a room, dividing spaces and adding structure to large rooms and open living spaces. Furthermore, it absorbs noise and retains heat.*

*The first part of this catalogue focuses on modern designs whereas the second part is dedicated to traditional and antique rugs.*



# Table of Contents

## Modern Collection

Energy . . . . .	2
Dara . . . . .	8
Alema . . . . .	16
Allos . . . . .	18
Anto . . . . .	24
Baral . . . . .	30
Barta . . . . .	38
Mosaic . . . . .	44
Leaf . . . . .	46
Kauria . . . . .	50
Arbor . . . . .	52
Lorry . . . . .	54
Urban . . . . .	58

## Classic Collection

Renaissance . . . . .	64
Katani . . . . .	68
Nain . . . . .	74
Tabriz . . . . .	76
Silk Carpets . . . . .	78
China Old & Antique . . . . .	84
Old & Antique . . . . .	88

Decoration Examples	92
---------------------	----

# Energy Collection

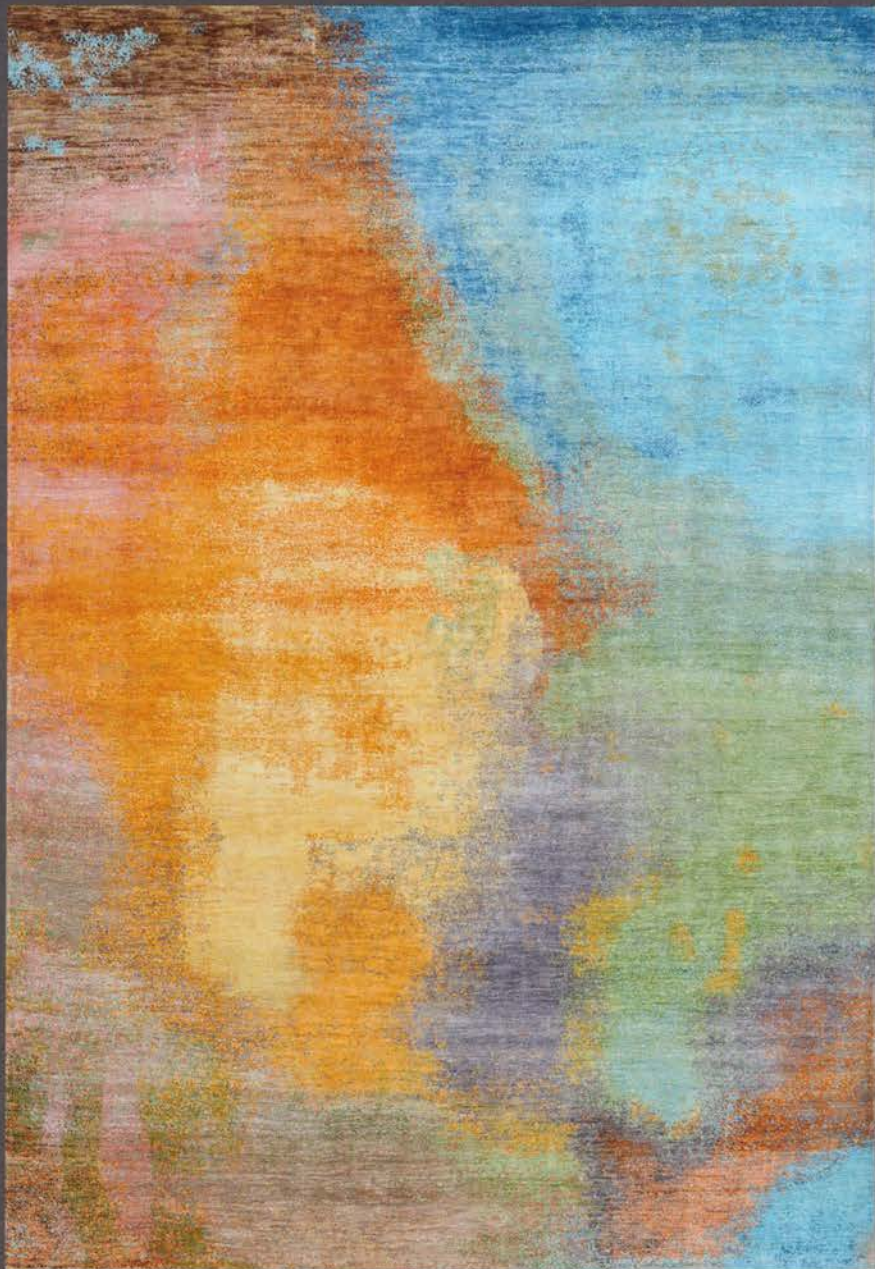
2

Sizes in cm: Material: Finest hand-carded,  
hand spun New-Zealand wool  
150 x 200 & bamboo silk. Persian hand  
170 x 240 knotting in India  
200 x 300 Weight: ca. 4 kg/m<sup>2</sup>  
250 x 300 Special sizes on request



*Shimmer*





Sunshine

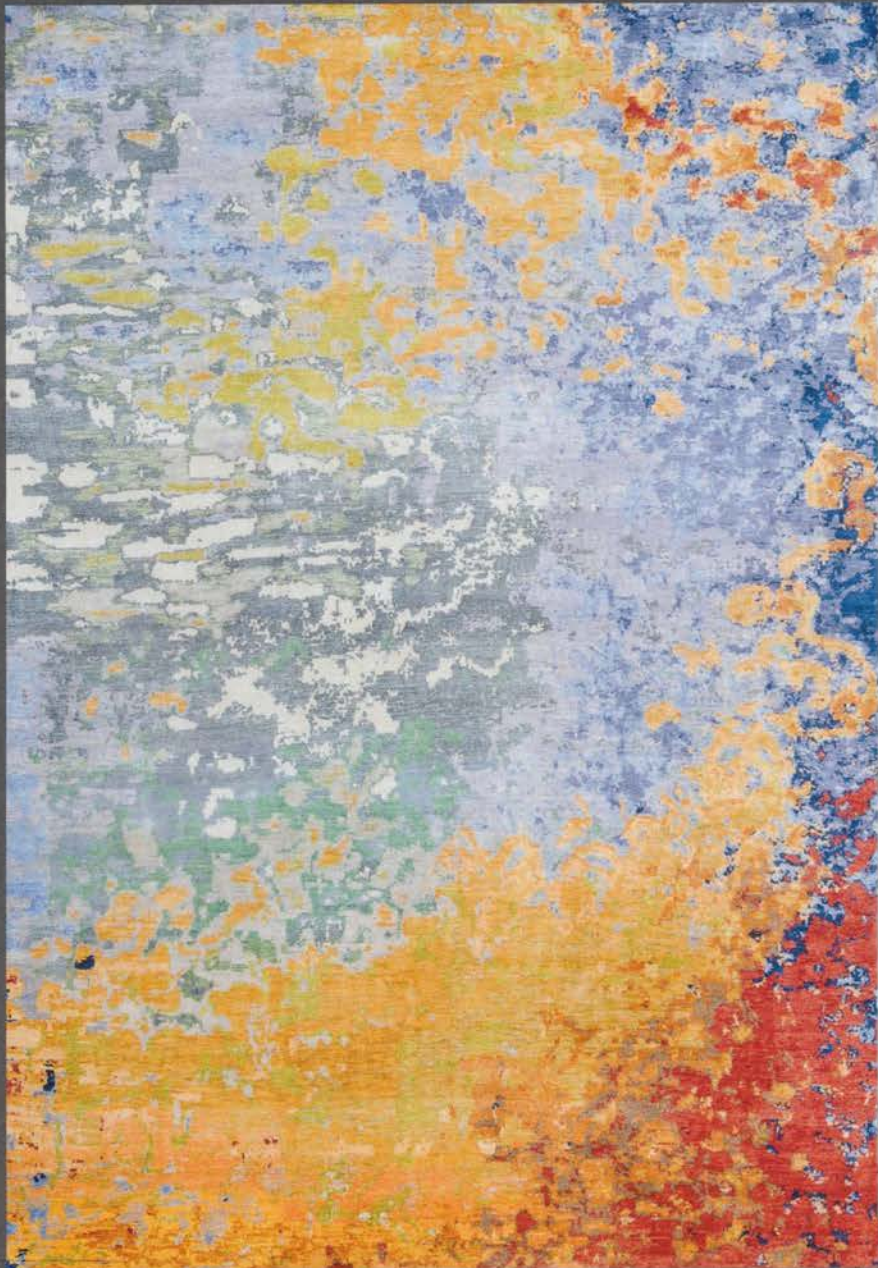


Sunset





Leila



4 Elements



„Betrachte den Menschen  
als ein Bergwerk, reich  
an Edelsteinen von  
unschätzbarem Wert.  
Nur die Erziehung  
kann bewirken, dass es  
seine Schätze enthüllt  
und die Menschheit  
daraus Nutzen  
ziehen kann.“

Bahá'u'lláh

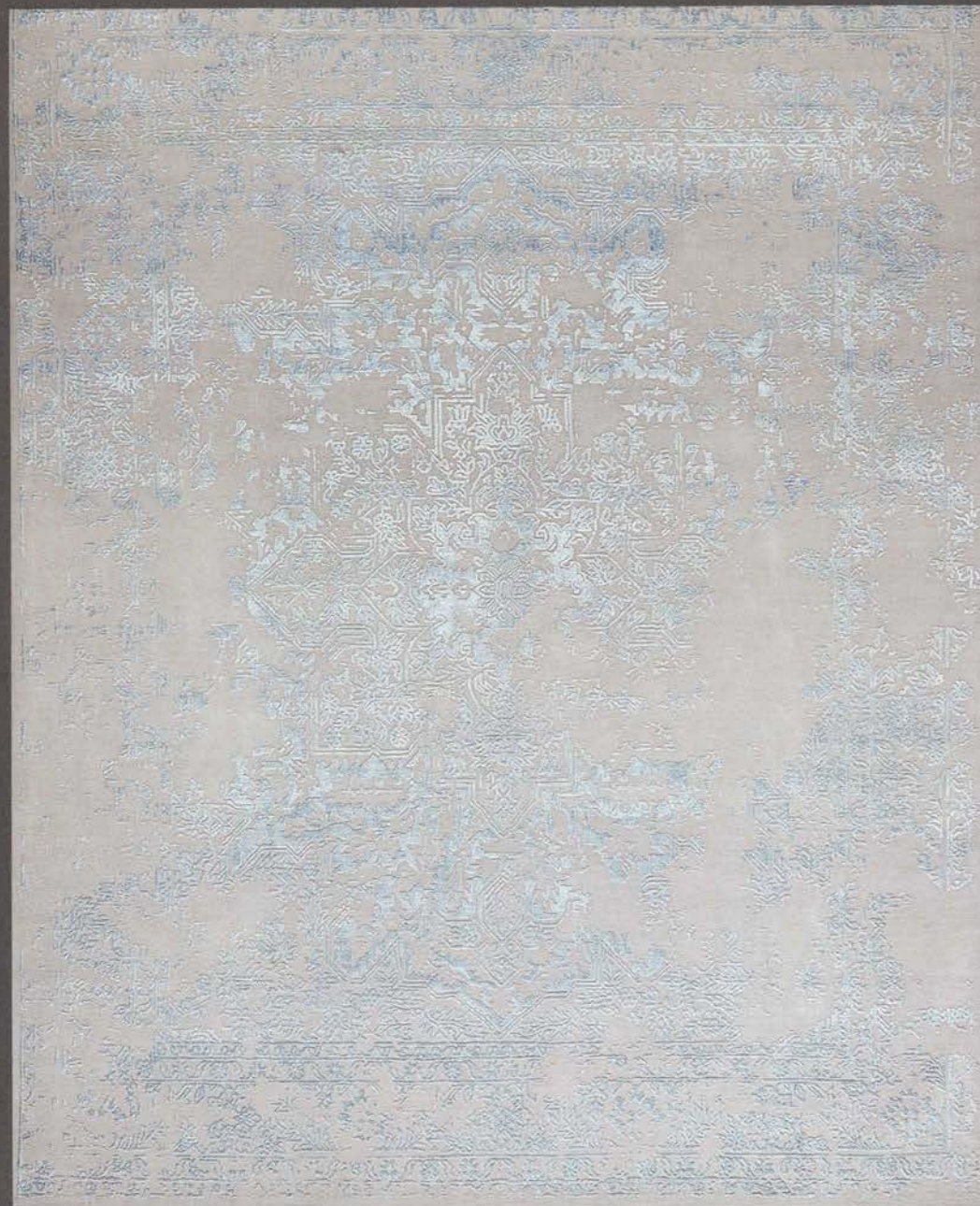
Designed by  
Leila Enayati

# Dara Collection

8

Sizes in cm:

100 x 150	
120 x 180	Material:
150 x 200	Finest hand-carded, hand spun
170 x 240	New-Zealand wool & bamboo
200 x 300	silk. Hand knotted in India with
250 x 300	Persian knotting
250 x 350	Weight: ca. 4 kg/m <sup>2</sup>
300 x 400	Special sizes on request



Heriz





*Sandstorm*



*Sandy*



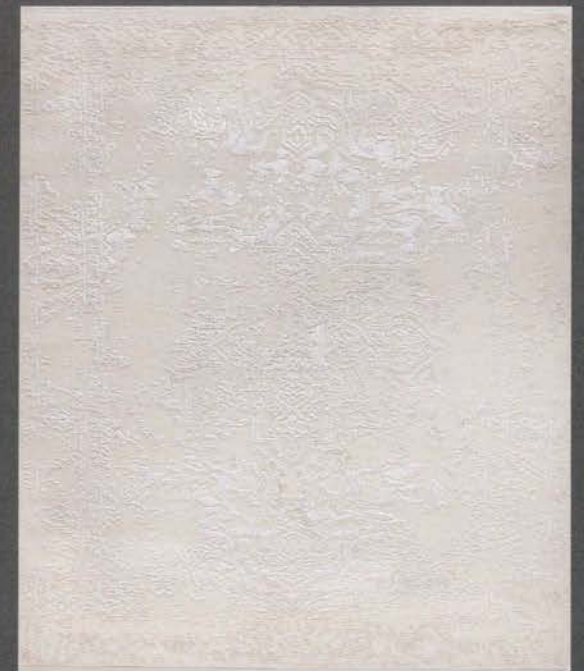
*Black Knight*



*Silver Heaven*

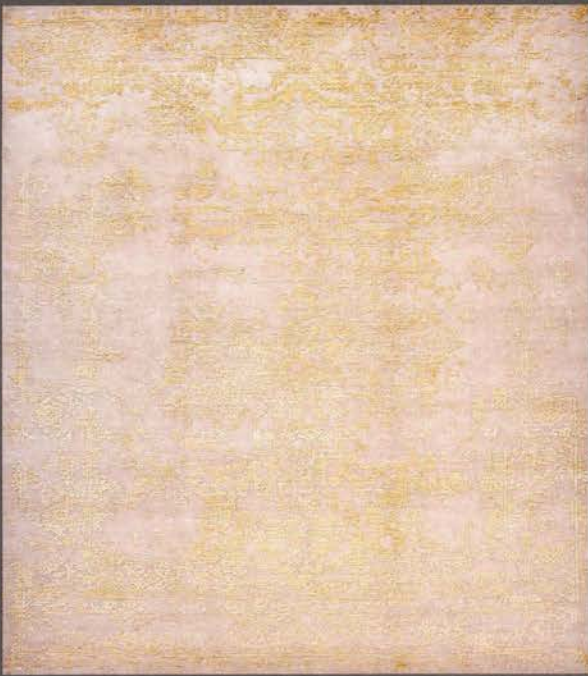


*Jade*



*Pearl*





*Golden Serapi*



*Coastline*



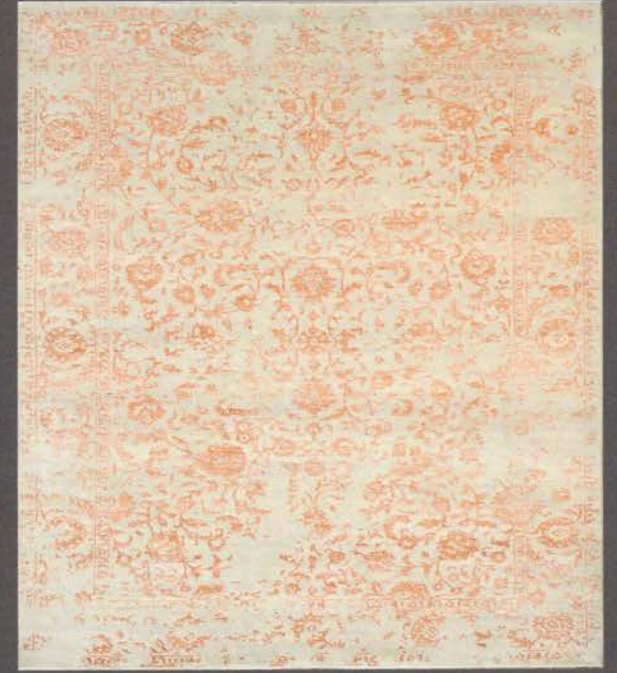
*Spring*



*Recife*



*Vision*



*Patmos*





*Rhino*



*Sahara*





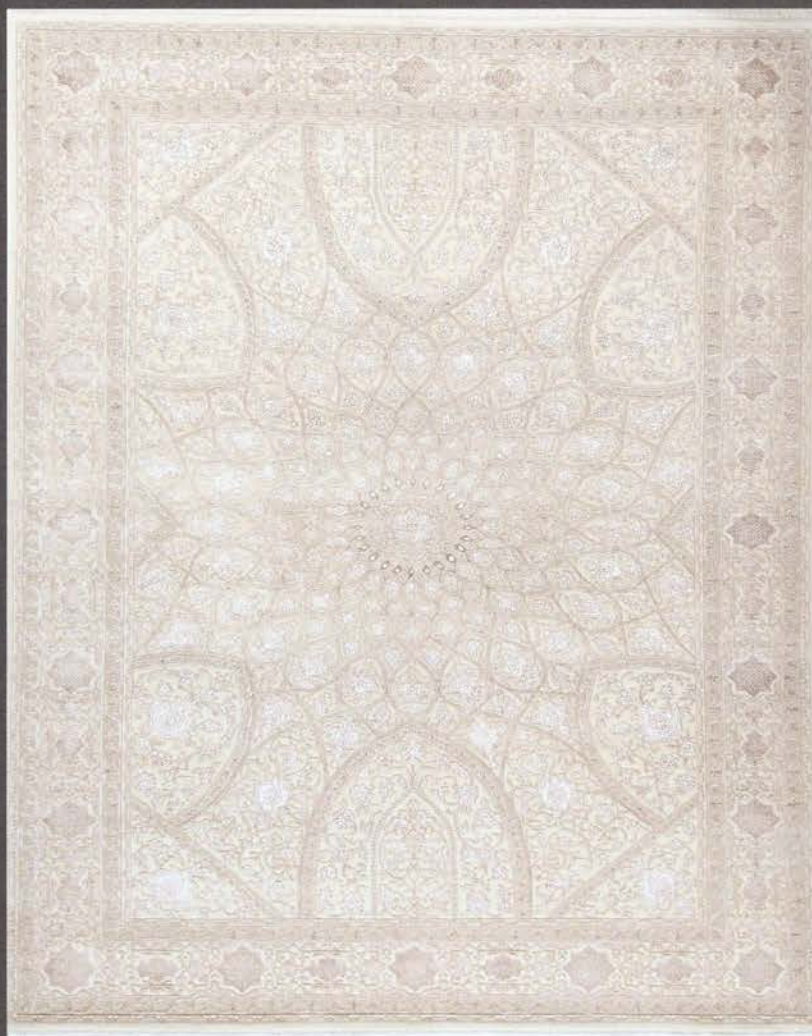
# Alema Collection

Sizes in cm:

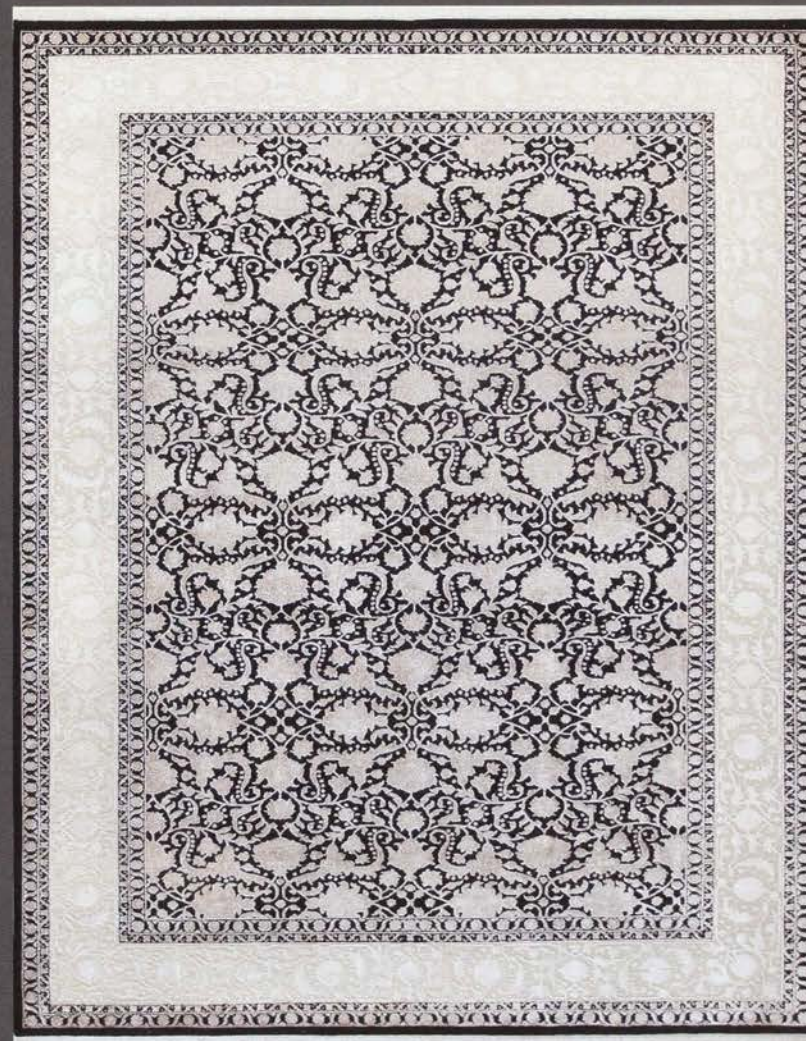
Material: New Zealand  
Wool & Bamboo silk  
Persian hand knotting in India  
Weight: ca. 4 kg/m<sup>2</sup>  
Special sizes on request

70 x 140  
120 x 180  
150 x 200  
170 x 240  
200 x 300  
250 x 300  
250 x 350

16



Gombad



Black 19



# Allos Collection

18

Sizes in cm:

150 x 200	Material: hand spun
170 x 240	bamboo silk
200 x 300	Hand knotted in India
250 x 300	Weight: ca. 4 kg/m <sup>2</sup>
250 x 350	Special sizes on request



Tamarillo



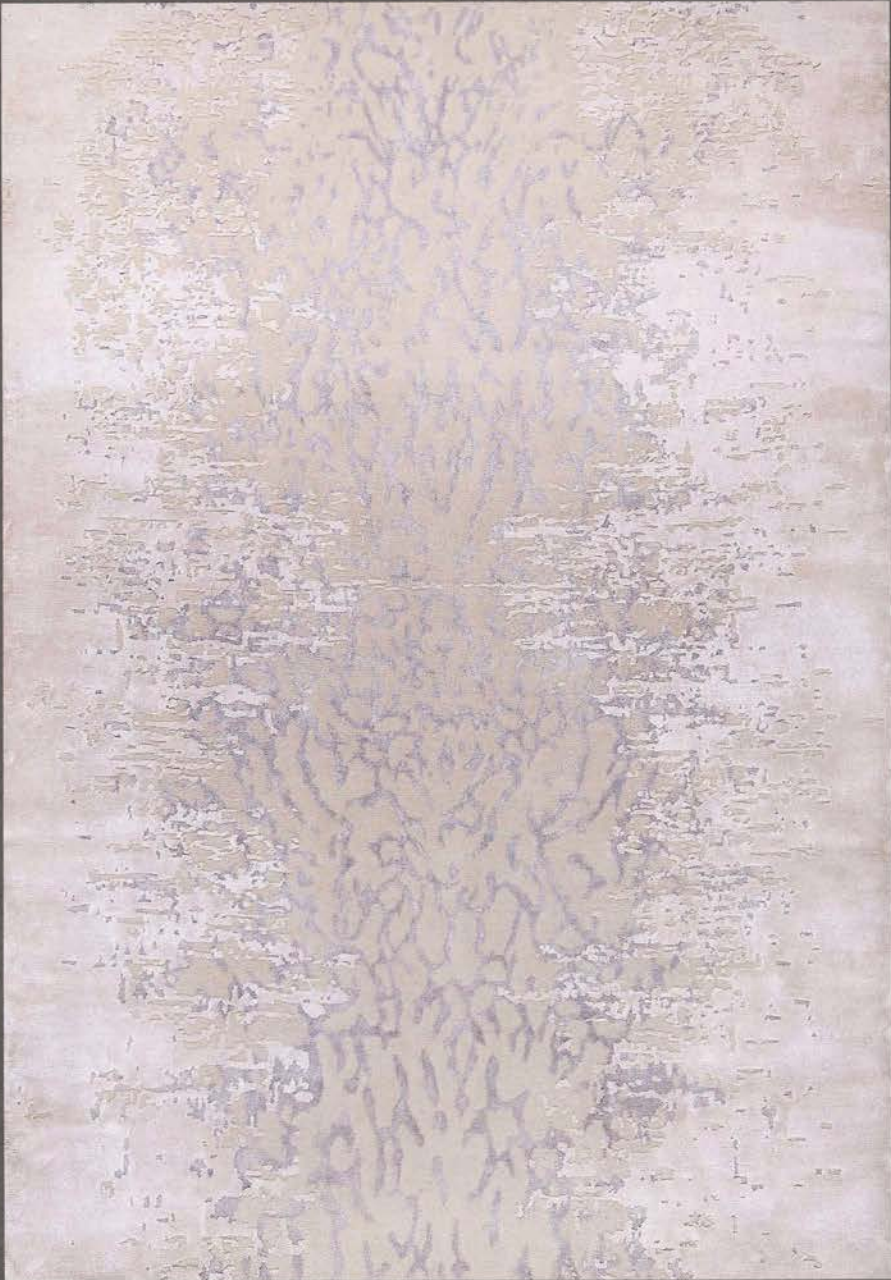


*Dimo*



*Savannah*





*Frozen River*



*Liano*





# Anto Collection

24

Sizes in cm:

100 x 150	
120 x 180	Material: Finest hand-carded,
150 x 200	hand spun New-Zealand wool
170 x 240	& bamboo silk
200 x 300	Hand knotted in India
250 x 300	Weight: ca. 4 kg/m <sup>2</sup>
250 x 350	Special sizes on request



Sultan







*Brass Garden*



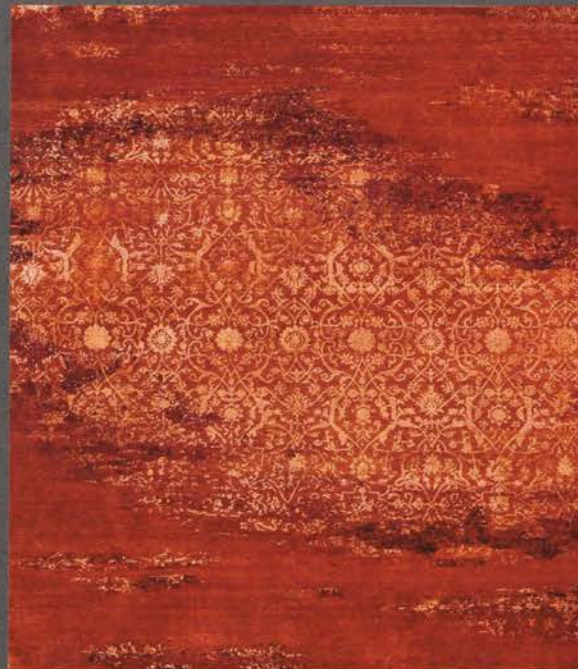
*Lava*



*Saffron*



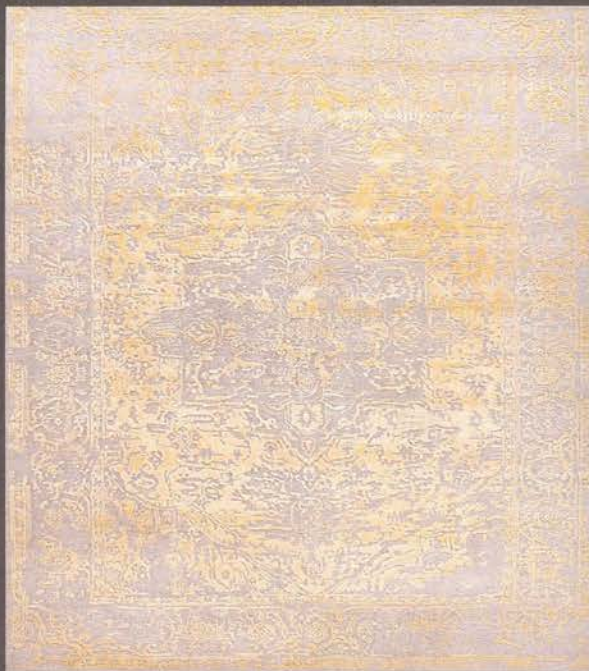
*Stream*



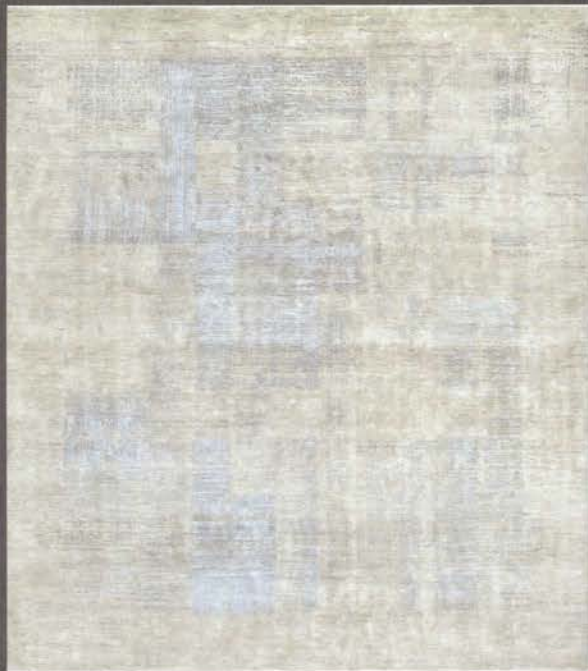
*Florance*



*Arctic Frost*



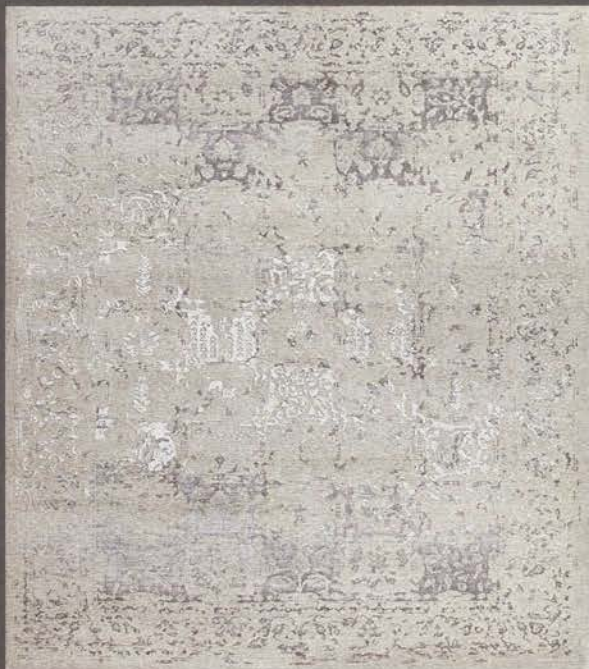
*Golden Heriz*



*Fragment Deluxe*



*Joy*



*Silver Chess*



*Flame*



*Grey Lake*



# Baral Collection

30

Sizes in cm:

100 x 150	Material: Finest hand-carded, hand spun blend mix New Zealand Wool & Bamboo silk Persian hand knotting in India Weight: ca. 4 kg/m <sup>2</sup> Special sizes on request
120 x 180	
150 x 200	
170 x 240	
200 x 300	
250 x 300	
250 x 350	



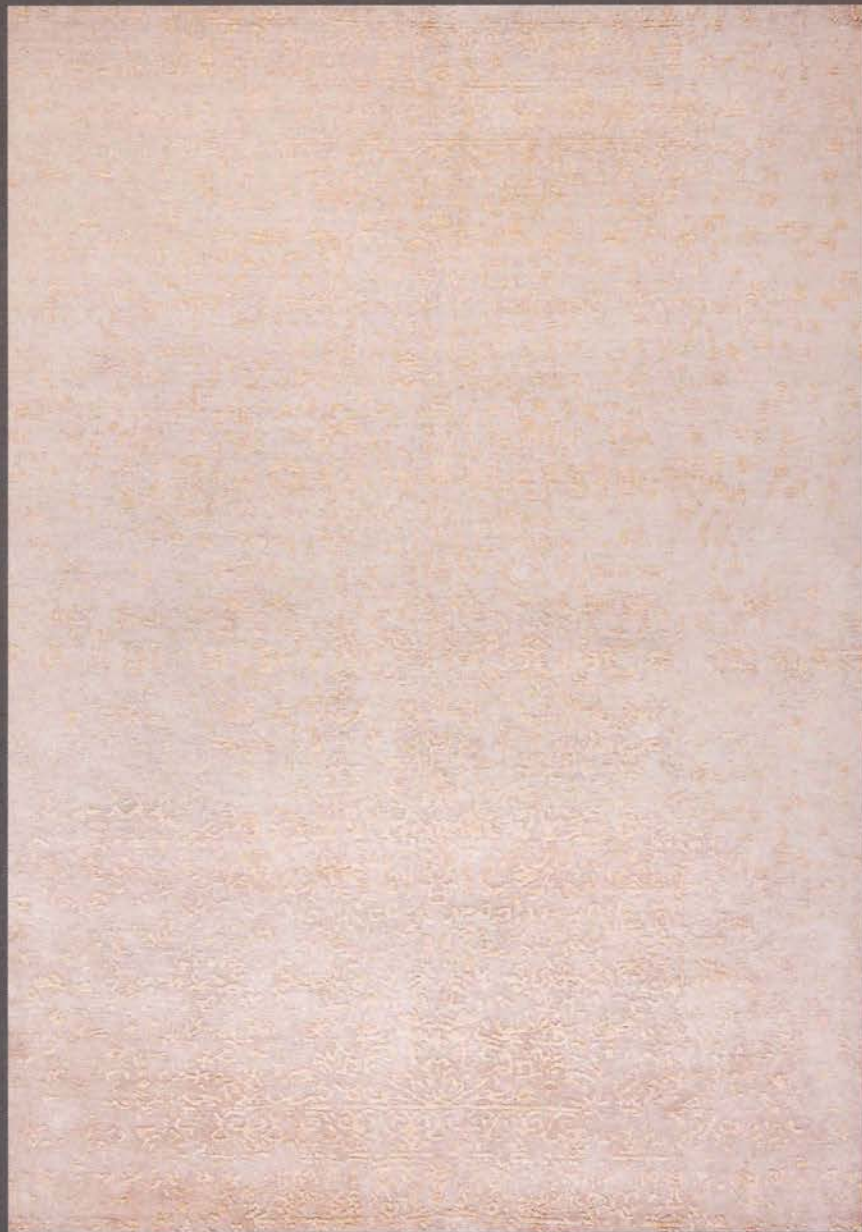
*Moonlight*







*Lotus*

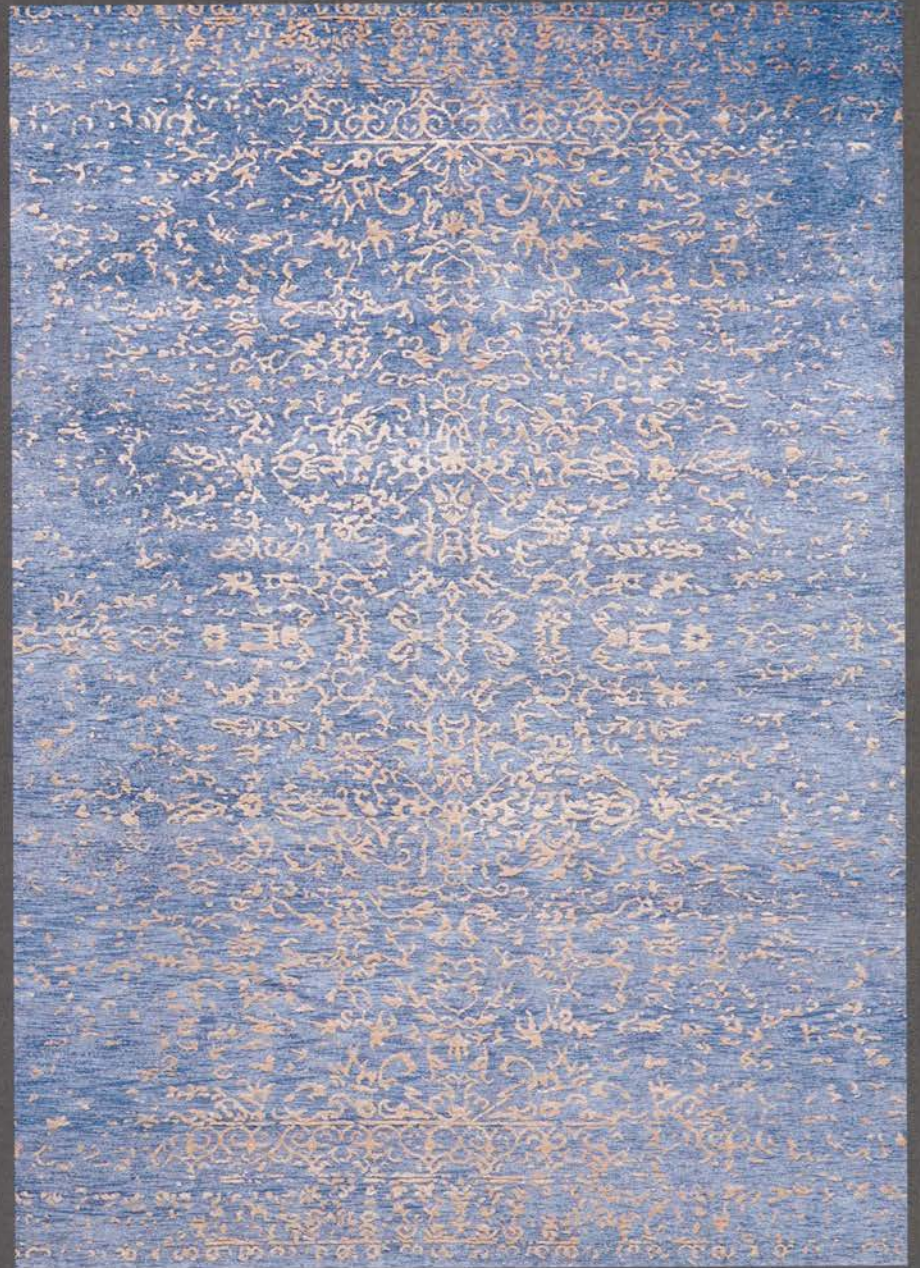


*Gloria*





*Poseidon*



*Lion's Mane*





*Sand Turquoise*



*Autumn Meadow*



# Barta Collection

38

Sizes cm:

100 x 150 Material: Finest hand-carded,  
120 x 180 hand spun New-Zealand wool  
150 x 200 & bamboo silk  
170 x 240 Hand knotted in India  
200 x 300 Weight: ca. 4 kg/m<sup>2</sup>  
250 x 300 Special sizes on request



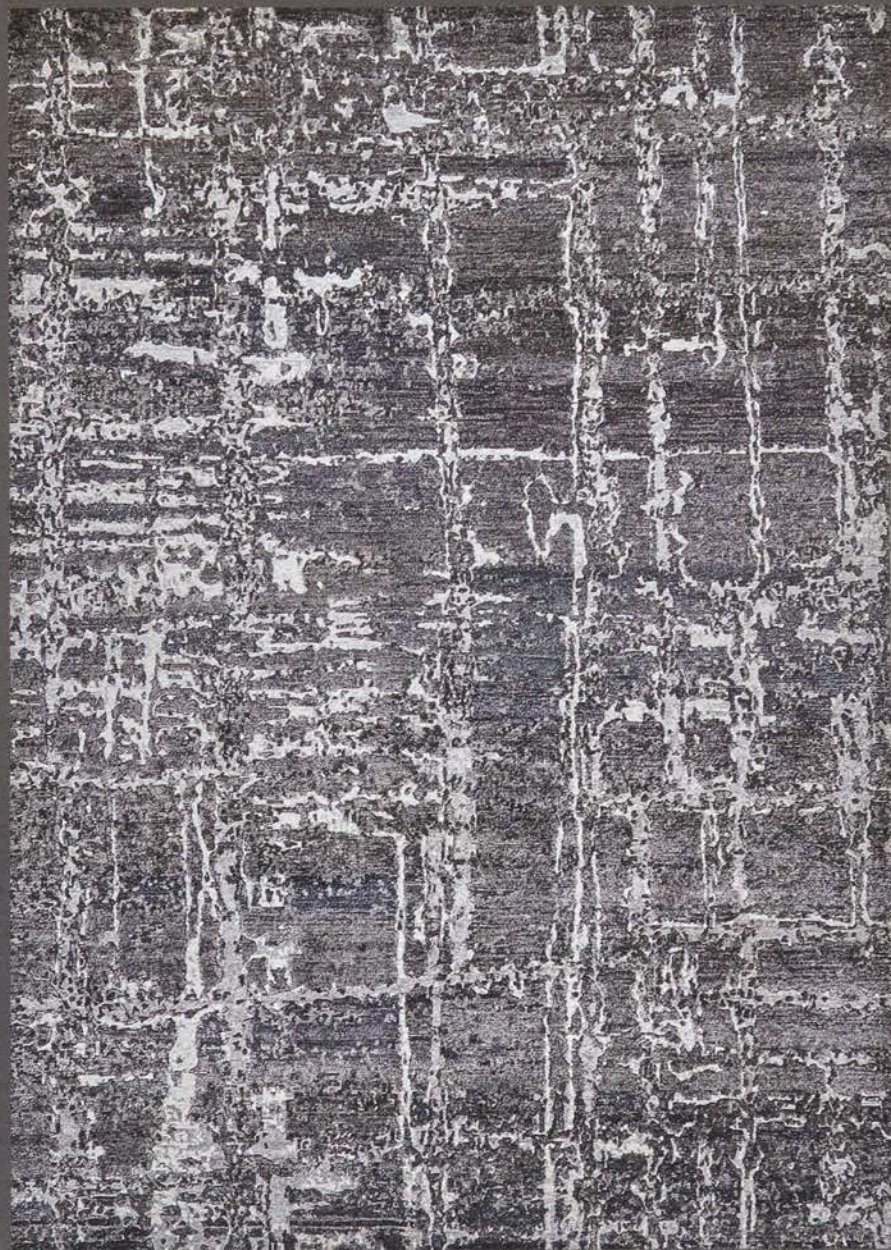
Copperfield







Chrome



Graphite





*Industrial Rust*



*Bamboo Forest*



*Grey Mountain*



# Mosaic Collection

Sizes in cm: Material: Finest hand-carded,  
hand spun New-Zealand wool  
& bamboo silk, Persian hand  
150 x 200 k.otting in India  
170 x 240 Weight: ca. 4 kg/m<sup>2</sup>  
200 x 300 Special sizes on request  
250 x 300

44



Beige



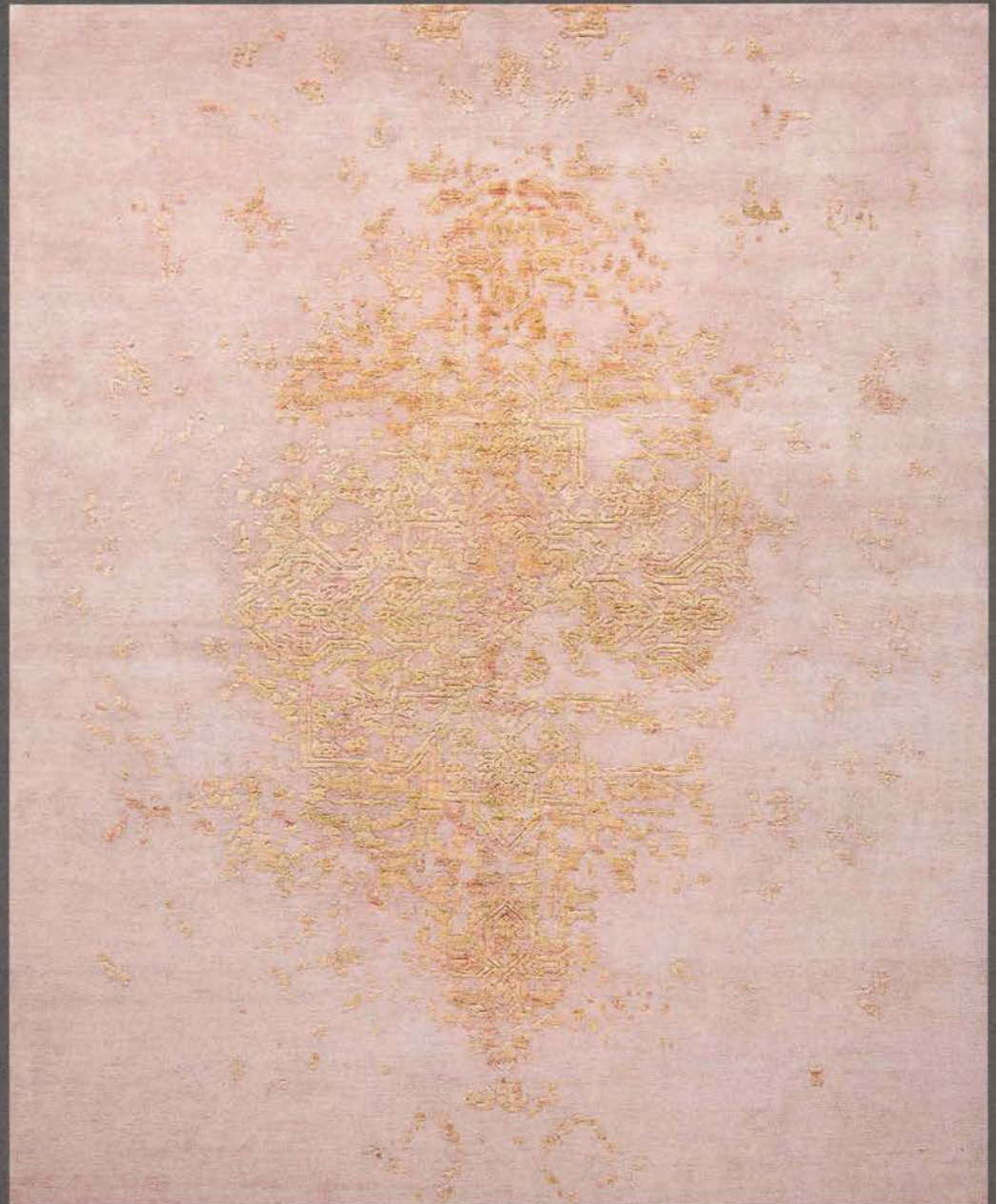
Blue



# Leaf Collection

46

Sizes in cm: Material: Finest hand-carded,  
hand spun New-Zealand wool  
150 x 200 & bamboo silk. Persian hand  
170 x 240 knotting in India  
200 x 300 Weight: ca. 4 kg/m<sup>2</sup>  
250 x 300 Special sizes on request



Sand







Orange



Purple

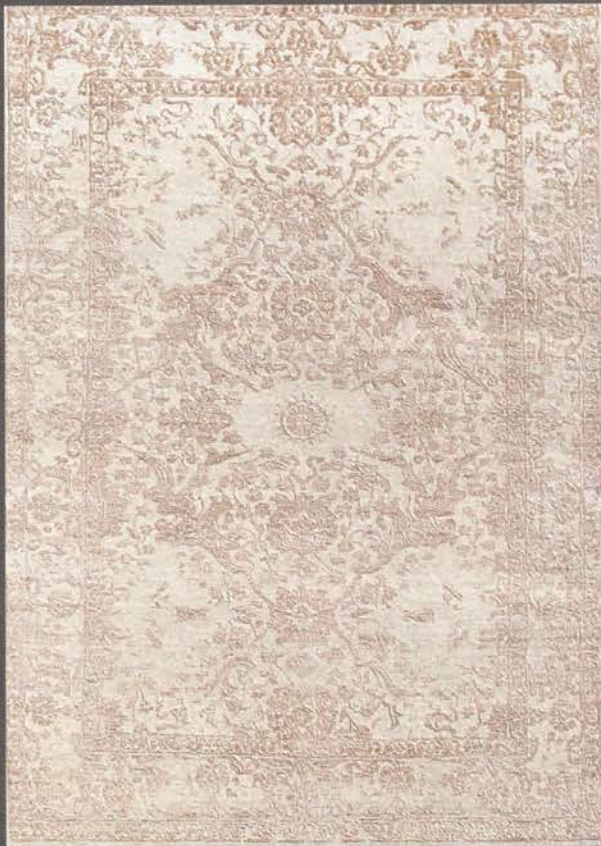


# *Kauria Collection*

Sizes in cm:

120 x 180	Material: Finest hand-carded,
150 x 200	hand spun New-Zealand wool
170 x 240	& bamboo silk
200 x 300	Persian hand knotting in India
250 x 300	Weight: ca. 4 kg/m <sup>2</sup>
250 x 350	Special sizes on request

50



*Kyoto Blossom*



*Winter Garden*



*Aspen*



# Arbor Collection

Sizes in cm:

70 x 140	Material: Finest hand-carded, hand spun New-Zealand wool & bamboo silk Persian hand knotting in India Weight: ca. 4 kg/m <sup>2</sup> Special sizes on request
100 x 150	
120 x 180	
150 x 200	
170 x 240	
200 x 300	
250 x 300	

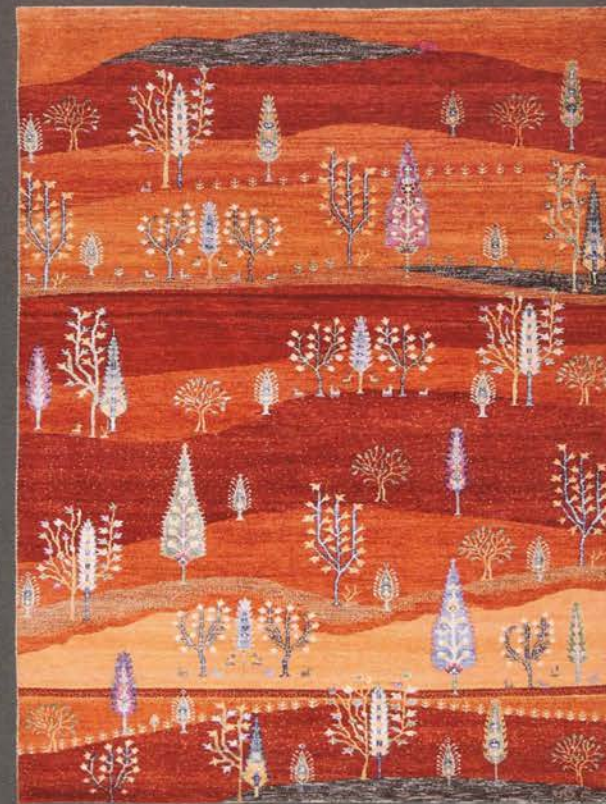
52



Autumn



Winter



Amber



# Lorry Collection

54

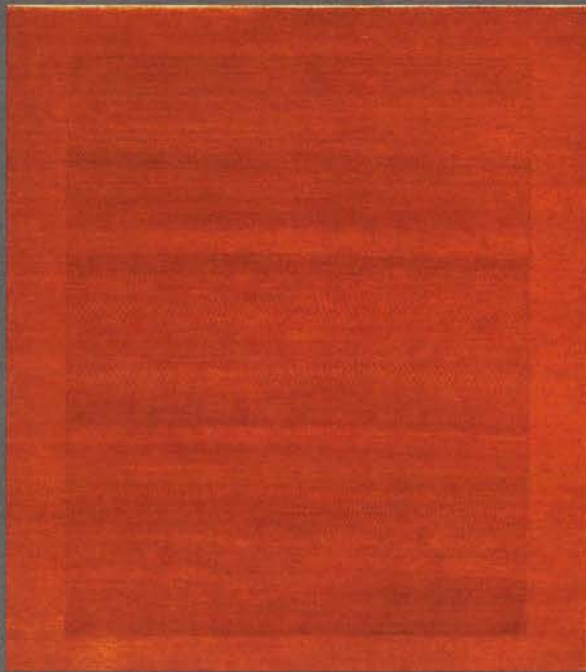
Sizes in cm:

- 70 x 140
  - 100 x 150
  - 120 x 180
  - 150 x 200
  - 170 x 240
  - 200 x 250
  - 60 x 300
  - 200 x 300
  - 250 x 300
  - 250 x 350
- Material: Finest  
handcarded, hand spun  
New Zealand wool  
Persian hand knotted in India  
Weight: ca. 4 kg/m<sup>2</sup>  
Special stress on request

Topaz



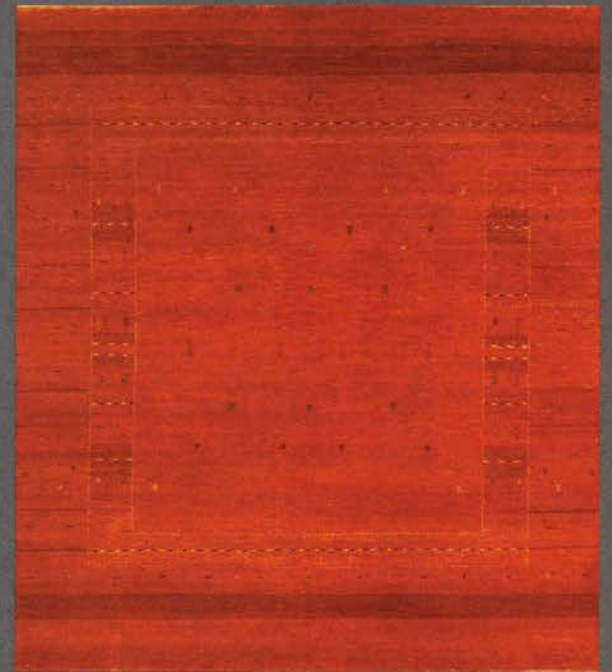




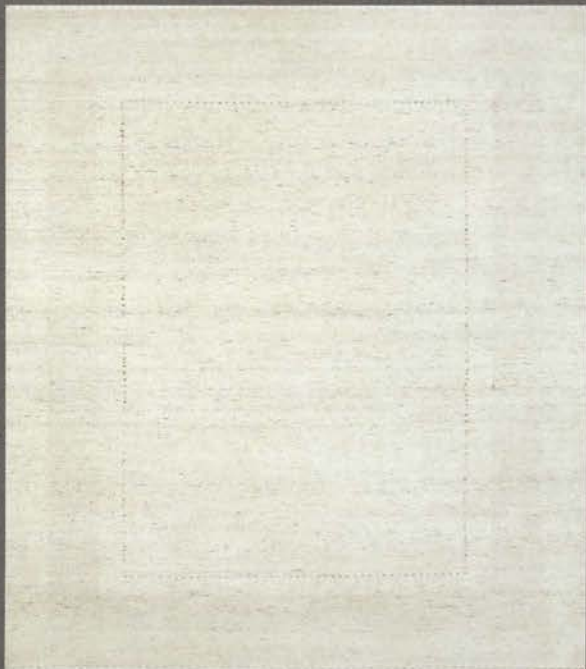
*Summer*



*Blue Night*



*Midday*



*Limestone*



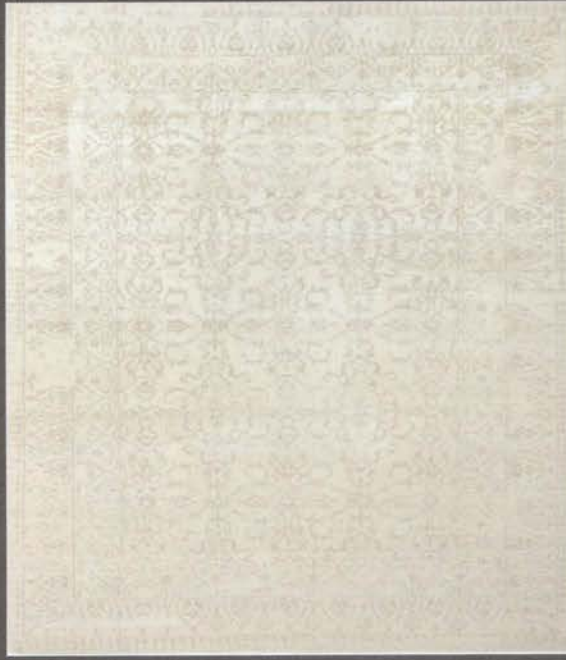
*Clover*



*Dolomite*



*Arabesque*



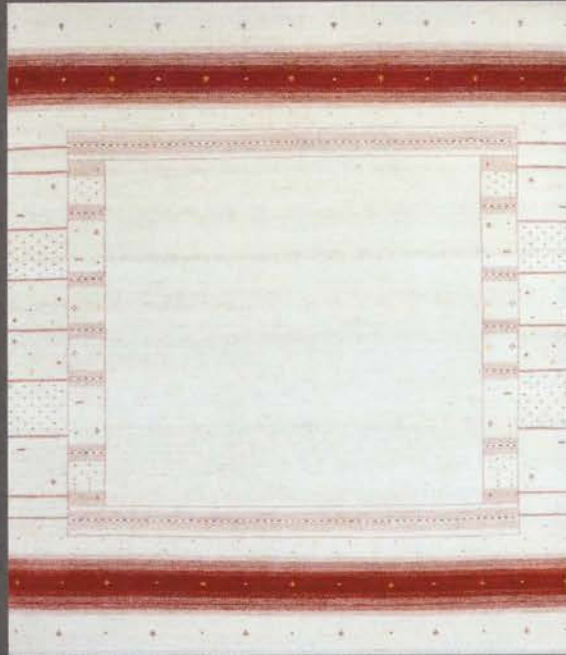
*Himalaya*



*Wedding*



*Moorish*



*Agate*



*Copper Mine*



# Urban Collection

58

Sizes in cm:

70 x 140	
150 x 200	Material: Finest handcarded,
170 x 240	hand spun New-Zealand
200 x 250	wool & bamboo silk
200 x 300	Hand knotting in India
250 x 300	Weight: ca. 4 kg/m <sup>2</sup>
250 x 350	Special sizes on request



Golden Nature





*Autumn*



*Aurora*



# Classic Collections

62

720x436  
Kashan Kork Antique







# Renaissance

Sizes in cm:

120 x 180	200 x 300	Material: Hand spun New Zealand Wool & viscose, Hand knotted in India. Weight: ca. 4 kg/m <sup>2</sup>
150 x 200	250 x 300	
170 x 240	250 x 350	
200 x 250	100 x 500	

64



*Grey Viscose*



*Beige Viscose*



*Light Green Viscose*





66

Renaissance



*Red*



*Anthracite*



*Green*



*Beige*



*Rust*



*Blue*

# Katani

Sizes in cm:

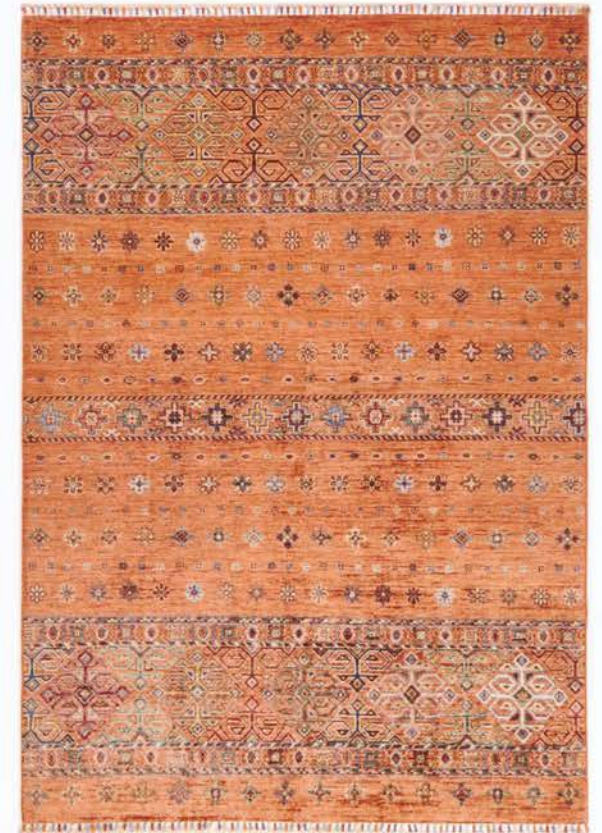
70 x 140	200 x 300	Material: Finest hand spun Ghazni wool. Hand knotted in Afghanistan Weight: ca. 4 kg/m <sup>2</sup>
100 x 150	80 x 300	
120 x 180	250 x 300	
150 x 200	250 x 350	
170 x 240	300 x 400	



Amin



Mona



Jan





70

Katani



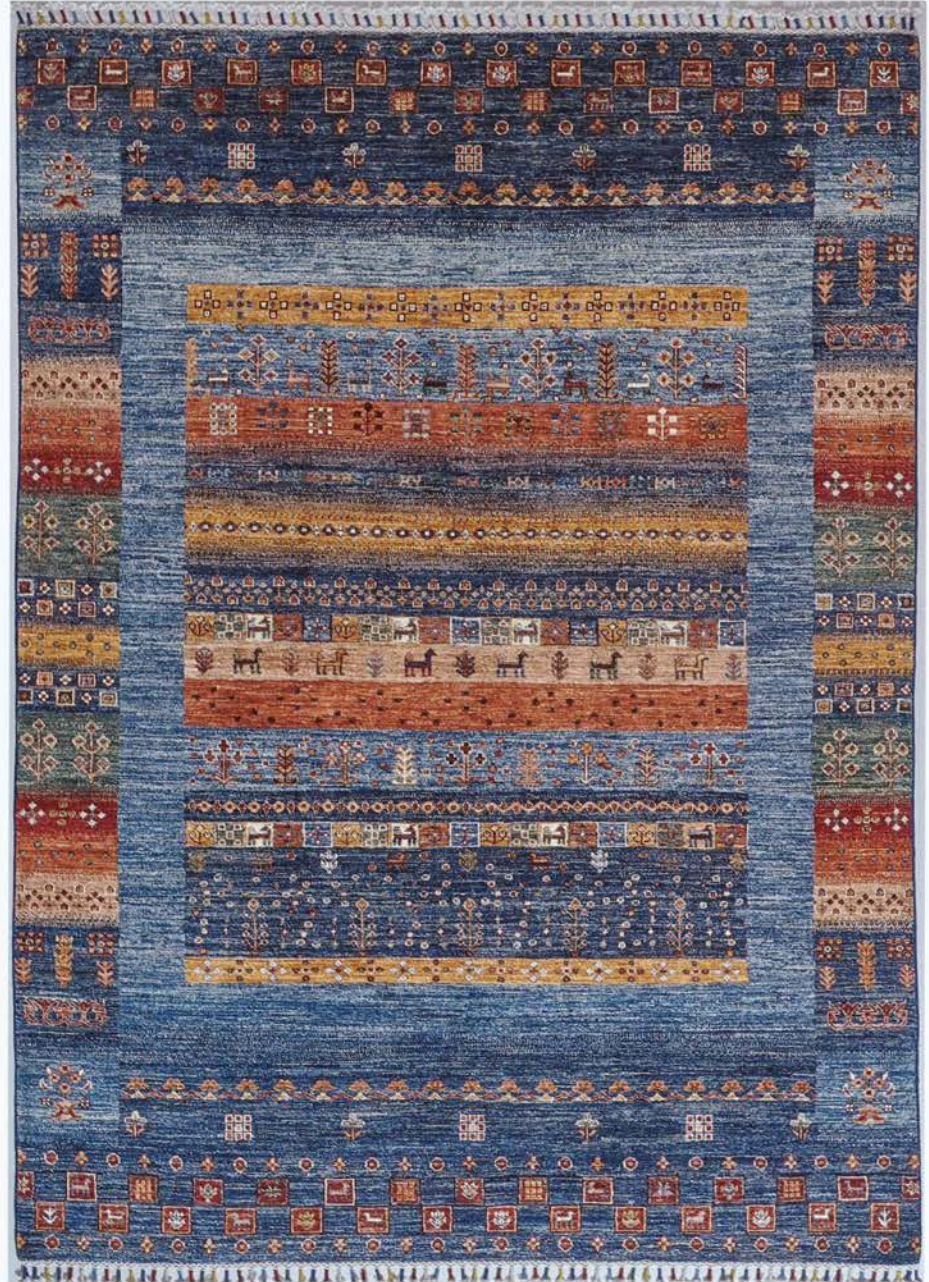
Kian







Arman



Frame Blue

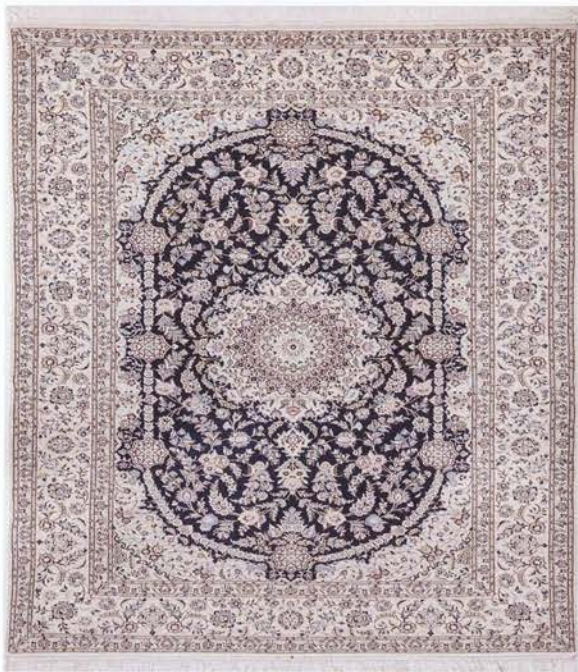


# Nain

74

302x252  
Nain 6 La





228x148 Nain 4 La



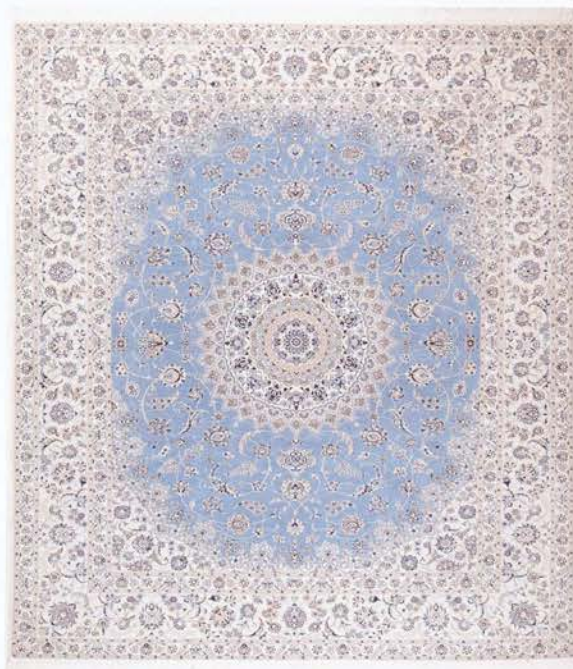
300x250 Nain 6 La



306x250 Nain 6 La



352x254 Nain 9 La



316x254 Nain 6 La



410x310 Nain 4 La

# Tabriz



76



303x199 Tabriz on Silk



304x200 Tabriz on Silk

# *Silk Carpets*

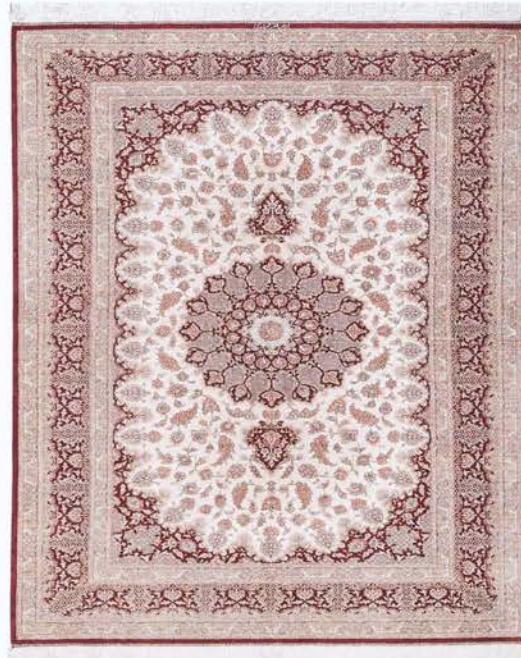


78





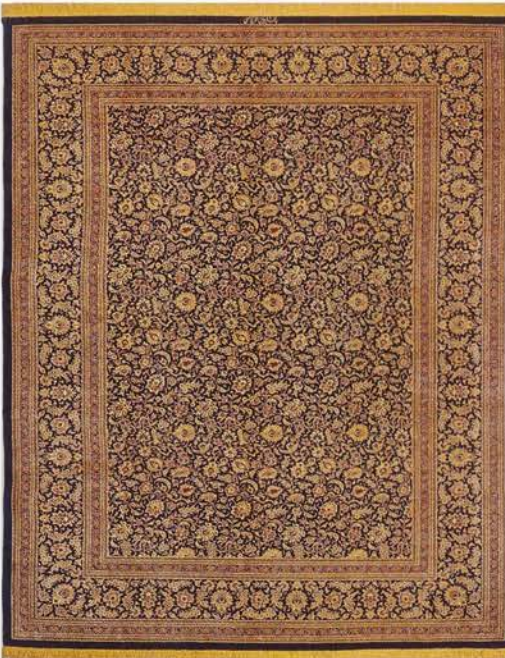
154x103 Ghom Silk Djamshidi



205x132 Ghom Silk Djamshidi



248x246 Kashmir Silk



237x165 Ghom Silk Ghaemi



246x152 Ghom Silk Mohammadi



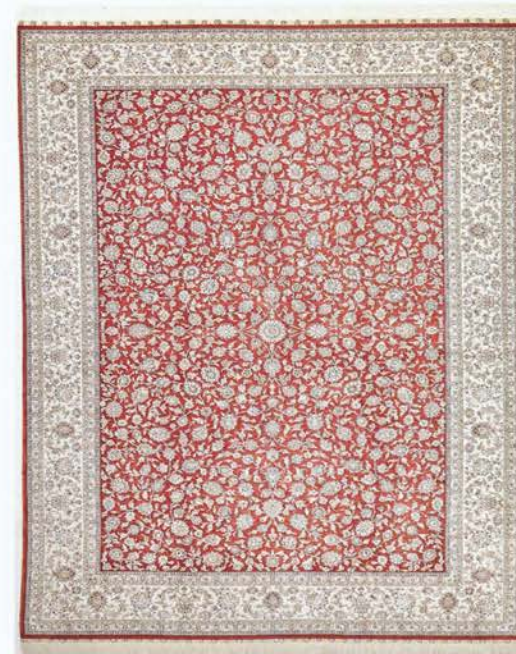
249x243 Kashmir Silk



249x170 Ghom Silk Djamshidi



252x244 Ghom Silk Mir Mehdi



271x183 Zhengping



285x185 Kashmir Silk



290x250 Ghom Silk Ahmadi

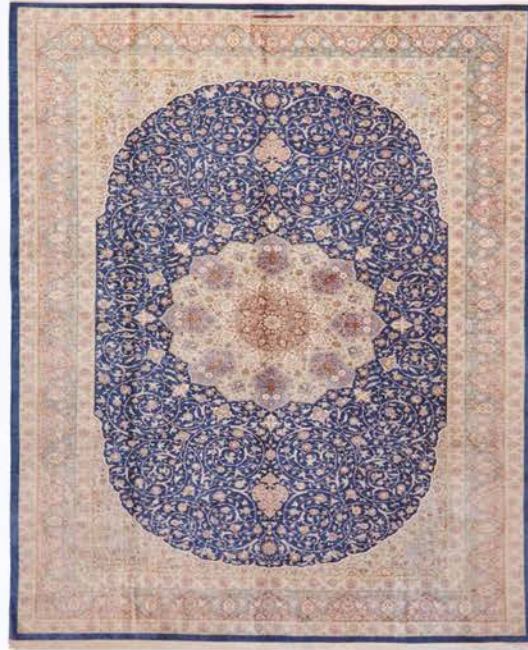


299x195 Ghom Silk Djamshidi





300x200 Ghom Silk Erami



301x199 Ghom Silk Ahmadi



311x215 China Silk



335x240 Kashmir Silk



337x245 Kashmir Silk



303x197 Ghom Silk Ahmadi



350x250 Ghom Silk Arslani



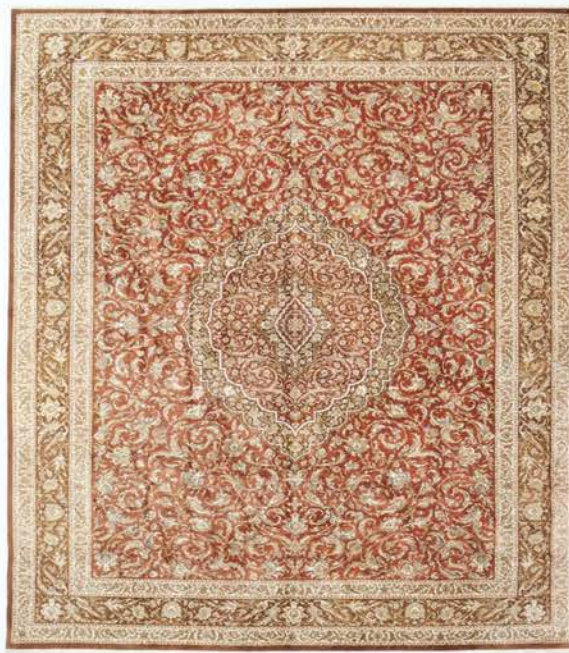
359x270 Kashmir Silk



374x277 Kashmir Silk



396x291 Ghom Silk



401x297 Ghom Silk Ahmadi



420x307 China Silk

# China Old & Antique

84

360x270  
China Antique





256x187 US-China Old



260x180 China Antique



277x227 China Antique



290x248 China Antique



292x248 US China Old



295x210 China Old



345x275 China Old



311x241 China Antique



346x250 China Antique



358x272 China Antique



363x272 China Old



365x280 China Antique





366x271 China Antique



398x325 China Old



395x302 China Antique



410x296 China



435x370 China Antique



585x310 China Antique

# Old & Antique

88



205x134 Kashan Kork



196x133 US-Mohtasham



207x132 Mohtasham Silk Antique



202x128 Kashan Manchester



205X130 US-Mohajeran



210x140 Sarough Old



257x175 Kerman Old



295x239 Kashan Kork Antique



290x235 US-Sarough



350x260 Sarough Antique



355x275 Sarough Antique



361x267 Mohajeran Antique



370x268 Kashan Manchester Antique



370x275 Sarough Antique



400x310 US-Sarough



405x300 Kashan Kork



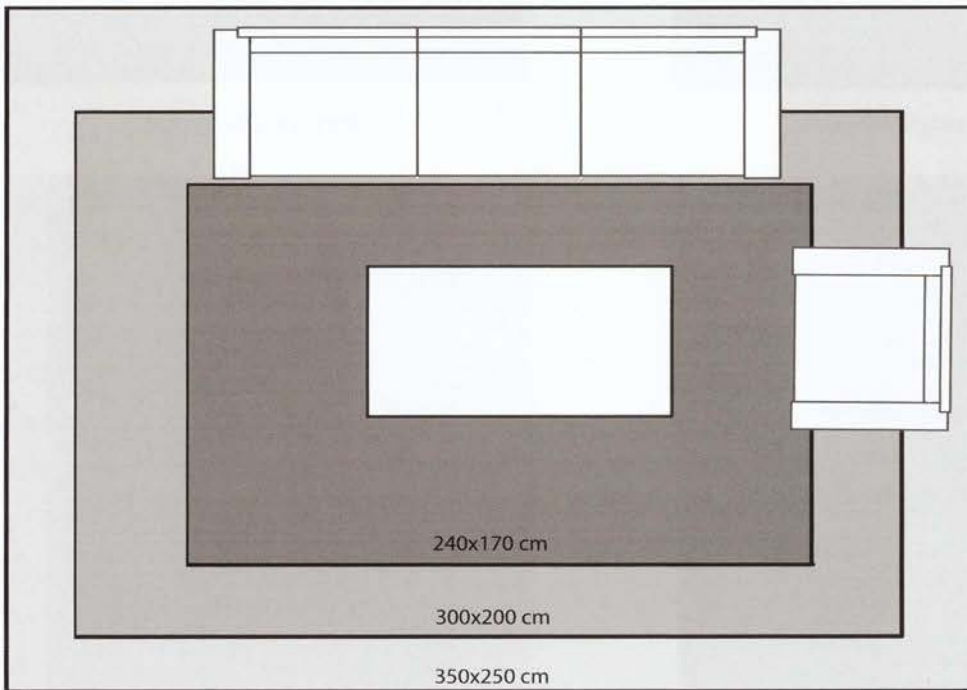
440x310 US-Kashan Kork



510x315 US-Kashan

## Carpet Size / Decoration Examples

A carpet is absorbing sound, brings structure, vibrant color and warmth in the room. The carpet size should match the furniture and the size of the room.



## Teppichgröße / Dekorationsbeispiele

Ein Teppich wirkt schalldämpfend, bringt Struktur, Leben, Farbe und Wärme in den Raum. Die Teppichgröße sollte auf die Möbel und die Raumgröße abgestimmt und positioniert werden.



## Living Room

Ideally, the entire seating landscape fits a carpet. In order to perceive the different elements as an unity, it is advisable to choose a larger and a rectangular shape carpet.



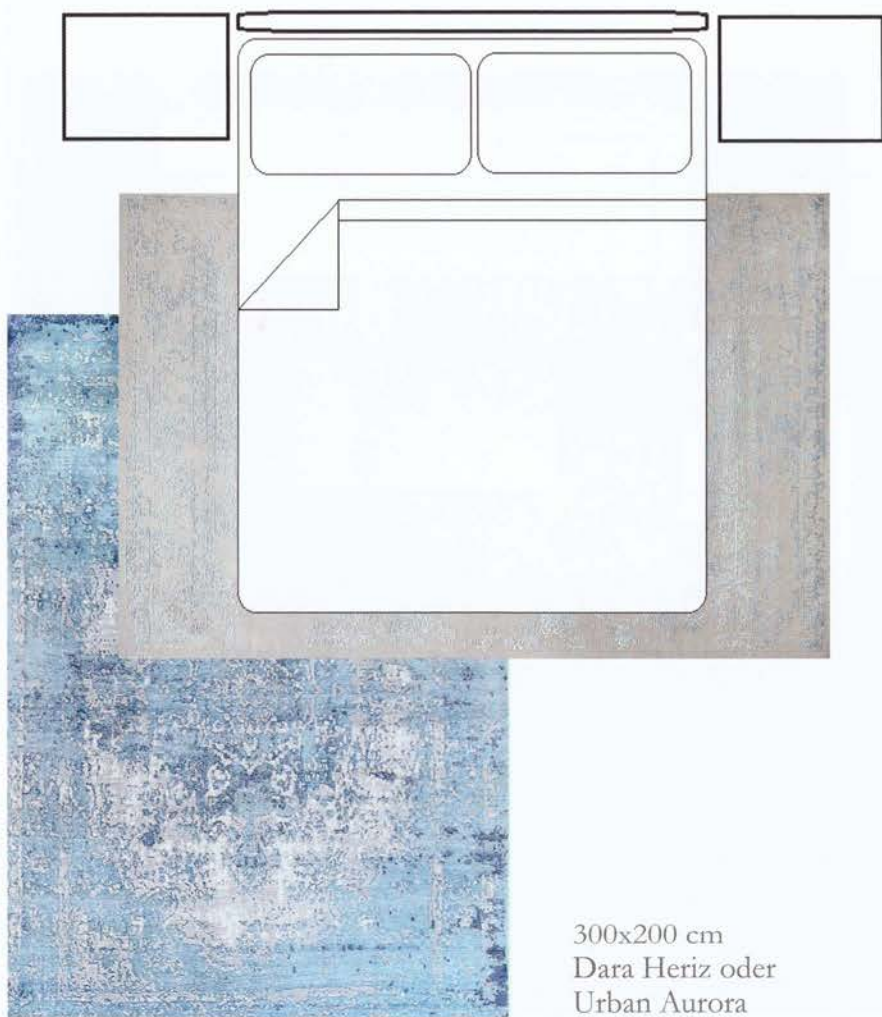
## Wohnzimmer

Idealerweise passt die komplette Sitzlandschaft auf einen Teppich. Um die verschiedenen Elemente als Einheit zu empfinden, empfiehlt es sich einen größeren, rechteckigen Teppich zu wählen.



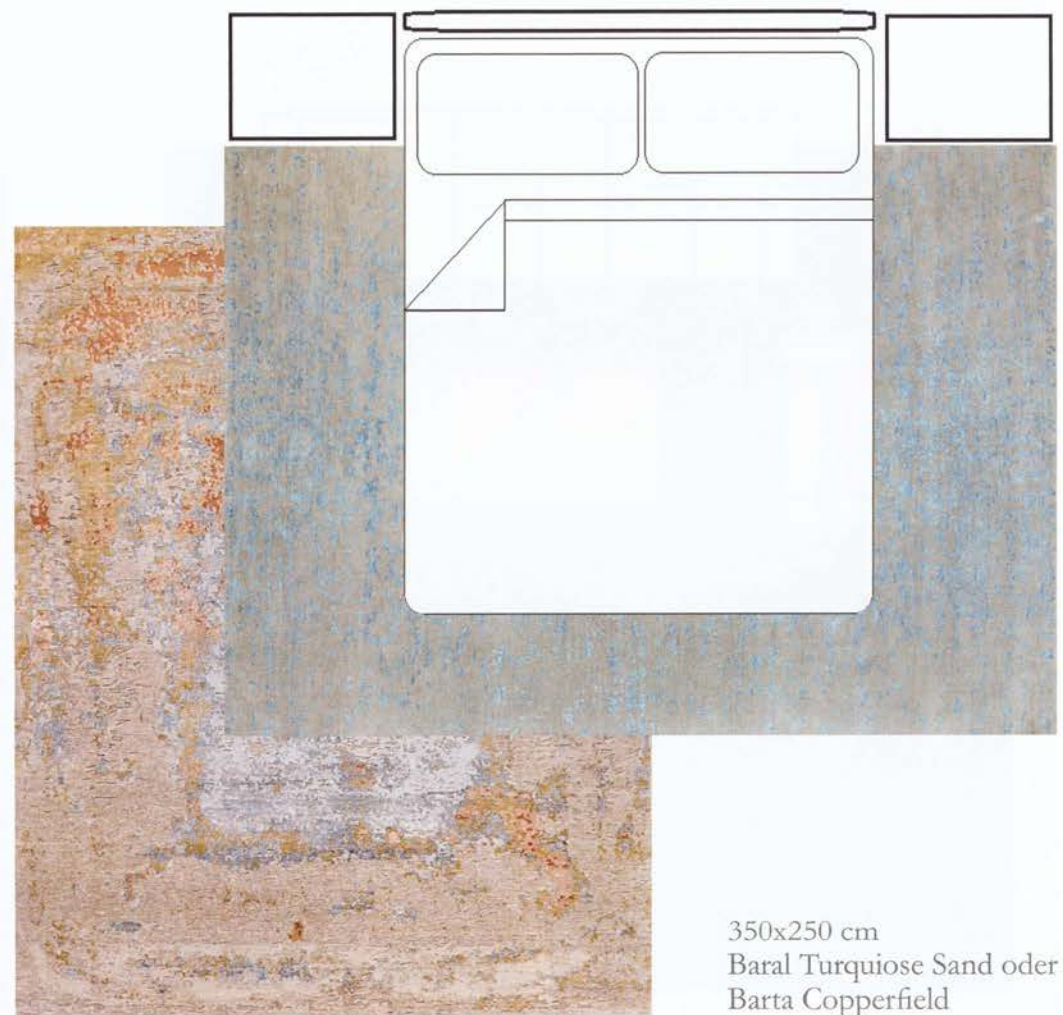
## Bedroom

To get out of bed with your feet stepping on the carpet, the carpet should enclose the bed sufficiently.



## Schlafzimmer

Um beim Aussteigen aus dem Bett mit den Füßen auf den Teppich zu treten, sollte der Teppich das Bett ausreichend umschließen.



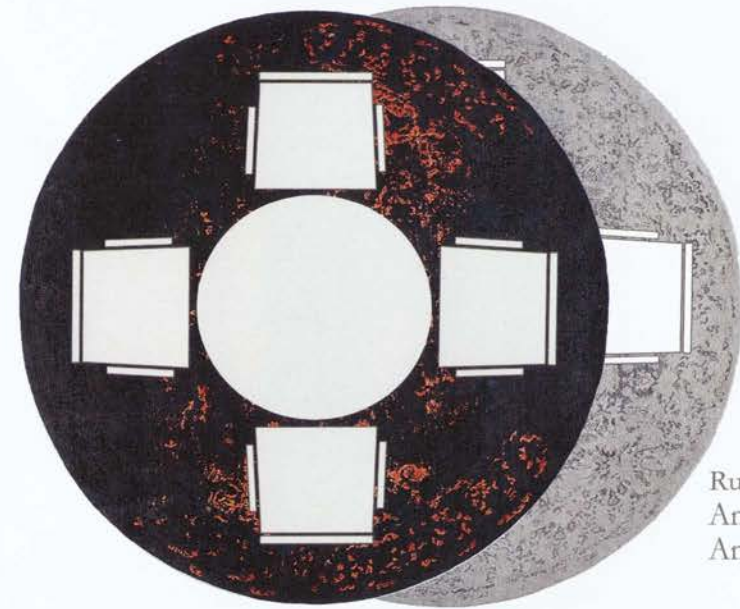


## Dining Room

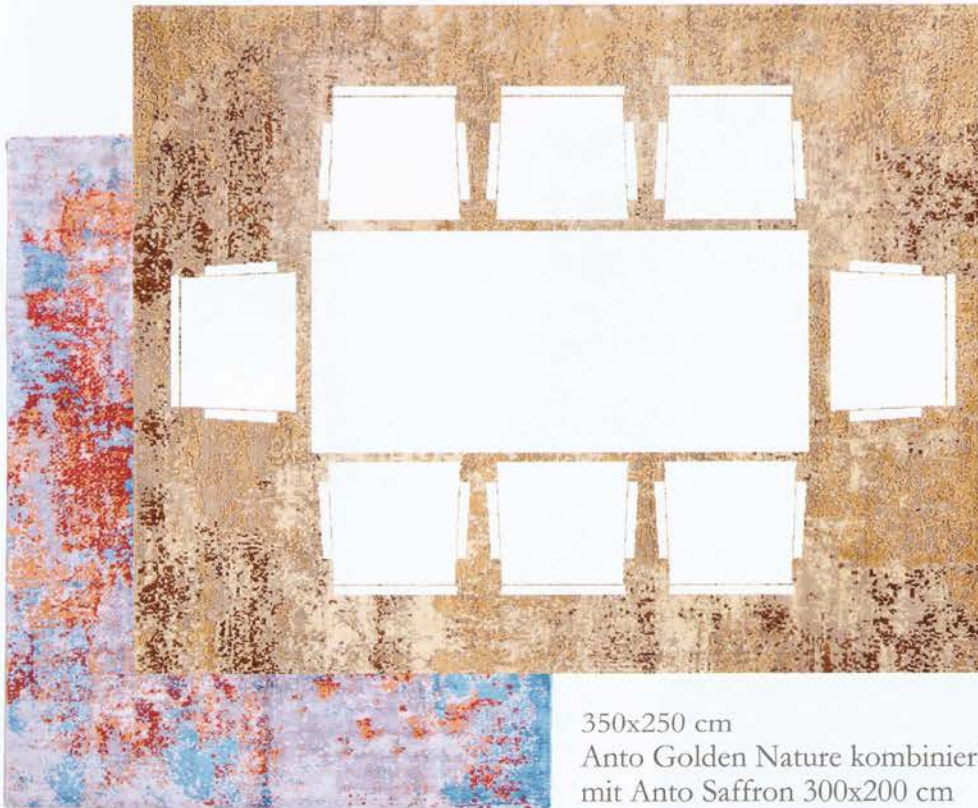
The carpet should protrude at least 75 cm beyond the edge line of the table, so that the chairs do not slide off the carpet when moving.

## Esszimmer

Die Teppichgröße sollte hier möglichst so gewählt werden, dass der Teppich mindestens 75 cm über die Randlinie des Tisches hinausragt, sodass die Stühle beim Verrücken nicht vom Teppich gleiten.



Rund 250 cm  
Anto Lava oder  
Anto Silver Chess



350x250 cm  
Anto Golden Nature kombiniert  
mit Anto Saffron 300x200 cm



300x250 cm  
Mosaic red kombiniert  
mit blue 300x200 cm  
oder beige 300x200 cm





**SHIRIN fliegenderteppich** | Churerstrasse 154/158  
CH-8808 Pfäffikon SZ  
Tel. +41 (0)55 420 49 10 | [info@fliegenderteppich.ch](mailto:info@fliegenderteppich.ch)  
[www.fliegenderteppich.ch](http://www.fliegenderteppich.ch)  
Mo - Fr 09:00 - 12:00 / 13:00 - 18:30  
Sa 09:00 - 17:00

# SHIRIN

seit 1979



**fliegenderteppich**

schöner wohnen